

Talk on Pupil Matters



Welcome to the RGPS Family!

On the first few days of school, we will have orientation programme for pupils to be familiar with arrival, recess, and dismissal routines. We will also provide time and support to help them ease the transition.



Welcome to the RGPS Family!

The school believes in the importance of maintaining a close partnership with parents/guardian for the growth of our pupils and has established different channels to communicate with you throughout the year.

1. Parent-Teacher Meeting (PTM)
2. Parent-Teacher Conference(PTC)
3. Parents Gateway(PG)/Email/Phone Call/Face to face



School Hours

Time	Mondays, Wednesdays, Fridays	Tuesdays, Thursdays
Arrival Time (latest by 7.25am)	Assemble in the school hall for Silent Reading.	Assemble in the school hall till <u>0710</u> . FT will lead pupils to the classroom.
7.30am	Sing National Anthem & Pledge-Taking	
9.00 – 9.30am	Recess (P1A – P1D)	
9.30 – 10.00am	Recess (P1E – P1I)	
11.30 – 11.40am	Snack Time	
1.20pm	School Dismissal	



Silent Reading (0700 - 0725)

- Mon, Wed and Fri : Bring an English storybook
- Tue and Thurs: Bring a Mother Tongue storybook

Recess and Extended Recess (will be stated on the timetable)

- Recess : 30min
- Extended recess : 30min + 30min = One hour
(once a week only)

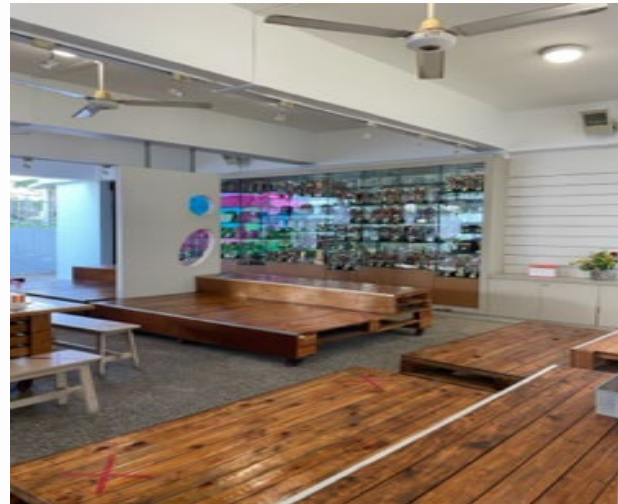
***\$3 per day*



Extended Recess



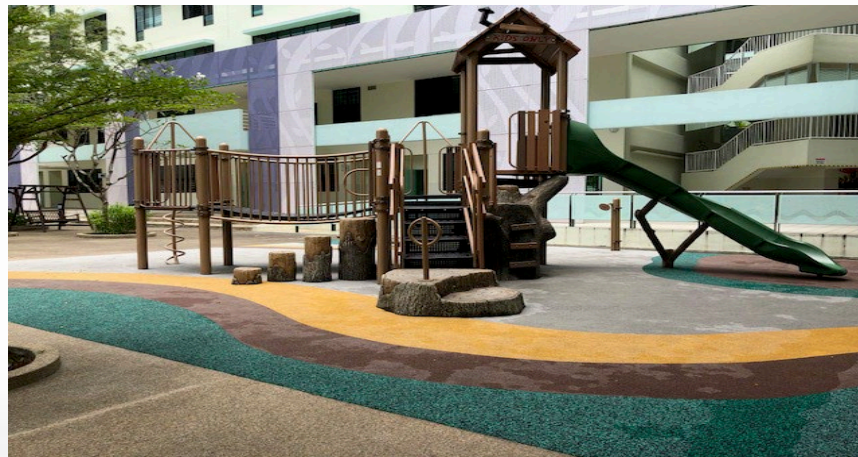
Library



Tinkering Courtyard



Learn and Share Corner



Playground



Snack Time (1130 - 1140)

- Do pack healthy snacks like sandwiches, fruit, biscuits, packet Milo or milk



Dismissal Time

- 1.20pm
- Please indicate your child's pick-up arrangement on her name tag.

Bus No

If your child is taking school bus

CP

If you are driving in to pick up your child at canteen pick-up point

G1

If you are picking your child at the Gate 1 where the security guard post is

Student Care

If your child is going to Student Care in RGPS

*** Do not change the pick-up arrangement. Inform the form teacher in advance if there are any changes to the dismissal arrangement.*



Dismissal Time

SAMPLE



RAFFLES GIRLS' PRIMARY SCHOOL

Class: <<class>>

<<NAME>>

Dismissal:

CP / Gate 1 / Student Care /

Bus No: 33A



Dismissal Time



RAFFLES GIRLS' PRIMARY

Class: <<class>>
<<NAME>>

Dismissal:

CP / Gate 1 / Student Care /

Bus No: 36



Reminders

- Preferably no trolley bags. Use bags made of lightweight materials.



Reminders

- Pencil case with necessary stationery items
- Colour pencils (12 colours)
- Tray and S Hook (optional) to organise the things



Reminders

- Water bottle with a sling
- Lunch box/ bag
- Wet wipes, tissues
- Label personal items



Preparing for first day of school 2 Jan 2025

- Bring a storybook, pencil case, colour pencils, water bottle, recess money/ food and additional snack for snack time.
- 1 parent can accompany the child into the school compound in the morning. The teachers will then take over and guide her to the hall.
- More information will be provided through Parents Gateway before school reopens.



PARENTS GATEWAY

Introducing Parents Gateway

The easier way for schools to
communicate with parents.



Communication

P1/2 Year Head's email address :

yue_siew_poh@schools.gov.sg

P1/2 Assistant Year Head's email address :

lim_pheh_fuen@schools.gov.sg



Contact Us

Should you have any queries, you may:

Call the General Office at 6468 4377

8am to 5pm, Monday to Friday

OR

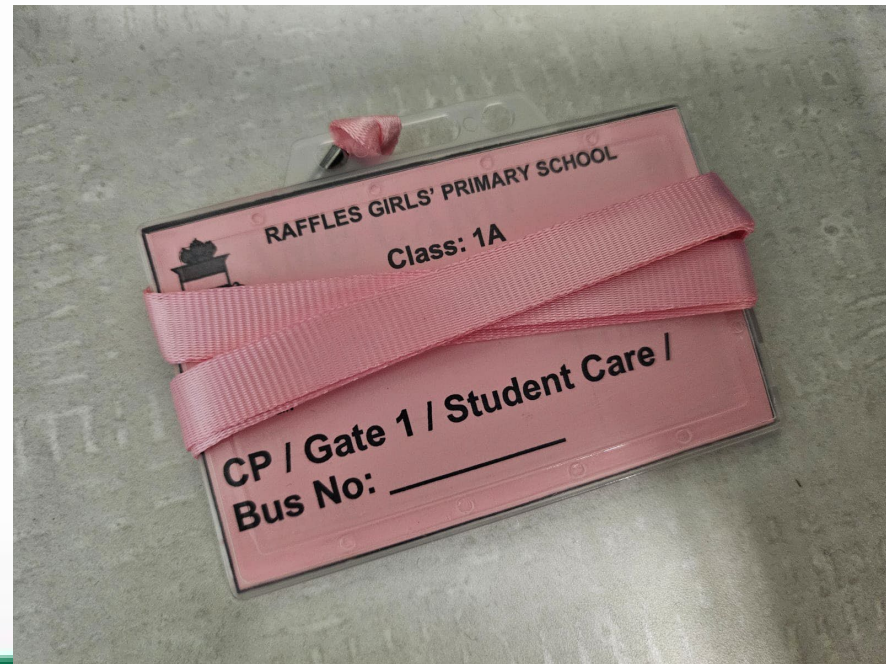
Write to us at rgps@moe.edu.sg



Reminder:

The Form Teachers have given your child the following items in class:

1. Orientation Envelope
2. Name Tag with lanyard (to wear on first 2 weeks of school)



Reminder:

3. The Family Race (card game)



Reminder:

4. Friendship bracelet and card (done by P6 2024 students)



When you pick your child from class later, please check that she has the items.



Thank You

